



-r



BECAUSE
the syllables
are reversed

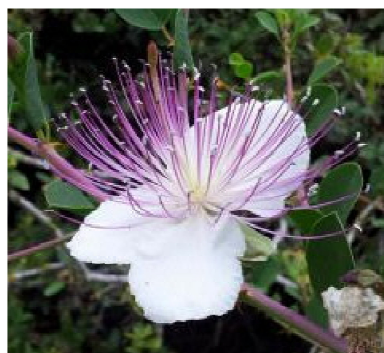
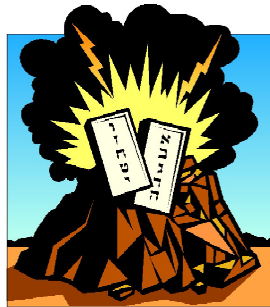
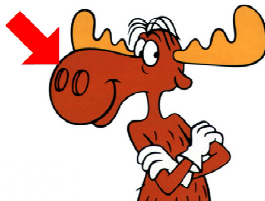
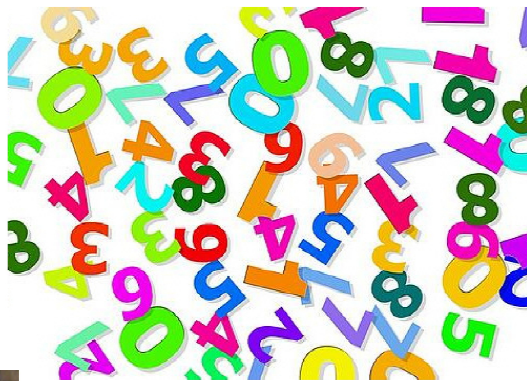
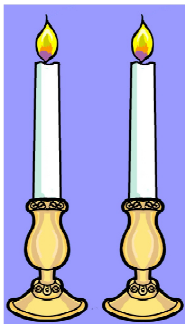
לוי רהם	שיטיון	ראובין א
זובין ה	יעלעבן	יהודה י
גדעלעבן	זעבלין	דן ז ינב
זעלעבן	יודע ז	אעלע יעלע



Ramban 4
Ramban 1

50¹⁰ 6

D + B = L
L = ?



2 x 1 = 2	3 x 1 = 3	4 x 1 = 4	5
2 x 2 = 4	3 x 2 = 6	4 x 2 = 8	5
2 x 3 = 6	3 x 3 = 9	4 x 3 = 12	5
2 x 4 = 8	3 x 4 = 12	4 x 4 = 16	5
2 x 5 = 10	3 x 5 = 15	4 x 5 = 20	5
2 x 6 = 12	3 x 6 = 18	4 x 6 = 24	5
2 x 7 = 14	3 x 7 = 21	4 x 7 = 28	5
2 x 8 = 16	3 x 8 = 24	4 x 8 = 32	5
2 x 9 = 18	3 x 9 = 27	4 x 9 = 36	5
2 x 10 = 20	3 x 10 = 30	4 x 10 = 40	5
7 x 1 = 7	8 x 1 = 8	9 x 1 = 9	10
7 x 2 = 14	8 x 2 = 16	9 x 2 = 18	10
7 x 3 = 21	8 x 3 = 24	9 x 3 = 27	10
7 x 4 = 28	8 x 4 = 32	9 x 4 = 36	10
7 x 5 = 35	8 x 5 = 40	9 x 5 = 45	10
7 x 6 = 42	8 x 6 = 48	9 x 6 = 54	10
7 x 7 = 49	8 x 7 = 56	9 x 7 = 63	10
7 x 8 = 56	8 x 8 = 64	9 x 8 = 72	10
7 x 9 = 63	8 x 9 = 72	9 x 9 = 81	10
7 x 10 = 70	8 x 10 = 80	9 x 10 = 90	10



The fun way to go over the weekly sedra with your children, grandchildren, Shabbat guests

BALAK

<> two Unexplaineds

Pi-N'CHAS

In years past, the PP of Pinchas had a picture of a well-known comedian and actor who has fallen into disrepute. So we have replaced him with Bing and subtract an r from his last name to give us what we are looking for <> Contradictory symbol of war (the spear) and peace (the dove with olive branch). Pinchas's act of "violence" was rewarded by the Covenant of Peace. It works this way sometimes <> so it is with the emblem of TZAHAL, the Israeli army. A sword and an olive branch. Israel wants peace but is ready to defend itself with the sword and G-d's help. <> Kohein Gadol's CHOSHEN, representing the perpetual covenant of the kehuna - BRIT K'HUNAT OLAM <> Broken 6 (look closely, there are breaks in the number) represents the broken VAV (numerical value of 6) in the word SHALOM <> Small 10 is for the small YUD (numeric value of 10) in

Pinchas <> large 50 is for the large NUN SOFIT (numeric value of 50) in MISHPATAN, their judgment, which Moshe brought before G-d - referring to the claim of the daughters of Tz'lofchad <> Loads of numbers for the counting of the people. It is the many countings that earned Bamidbar its other name of Sefer P'kudim, from which comes its English name, Numbers <> Two lambs are the daily T'MIDIM, or the Musaf of Shabbat - both of which are mitzvot in Pinchas <> Binoculars are for Moshe Rabeinu to look out over the Land... as he was told to do by G-d (while he didn't use binoculars, his vision of the Land was miraculously enhanced by G-d to allow Moshe to see all the Land <> there is a collection of symbols representing Shabbat (candle sticks) <> Pesach (Seder plate) <> Shavuot (Har Sinai with the Luchot) <> Rosh HaShana (shofar - which is also its own mitzva in the sedra, not just a symbol for RH) <> Yom Kippur (father and son saying vidui) <> Sukkot (Lulav & Etrog) <> The Maftir readings for all of the Holidays come from Parshat Pinchas <> along the bottom of the ParshaPix, from left to right, is an updated redo of an old (one of the oldest) PPP (ParshaPixPuzzles). It reads from left to right: candy CANE inside a musical NOTE. Which is a KEIN B'NOT... Next is the flower of the caper plant - in Hebrew, TZALAF, followed by musical

symbol for a SHARP, in Hebrew - CHAD, giving TZ'LOFCHAD, Yogi bear is a DOV and the piece of the multiplication table reminds us of the method by which many of us had to learn it - namely, by ROTE. All together, we have G-d's answer through Moshe to Machla, No'a, Chogla, Milka, and Tirtza: KEIN B'NOT TZ'LOFCHAD DO'V'ROT <> The bird is an albatross, a.k.a. a gooney bird or just a gooney - and thus it represents GUNI, one of Naftali's sons and the family name of those who descended from GUNI <> The worm is for TOLA, son of Yissachar <> The compass with its needle pointing north is TZ'FON, son of GAD <> large wine cup is a KOS SHEL ELIYAHU, appropriate to Parshat Pinchas because of the Midrash that says that Pinchas was Eliyahu <> bunch of keys. In Hebrew, the term TZ'ROR MAFTEICHOT refers to a bunch of keys. The command to Moshe was to TZAROR ET HAMIDYANIM, attack the Midyanites and kill them. TZ'ROR/ TZAROR <> BELA is one of the sons of Binyamin. The vampire-looking fellow in the picture is BELA Lugosi, who played Count Dracula on the stage (1927) and in the movies (from 1931) <> Bullwinkle the moose with the arrow pointing to his nose is for moose-af, that is, MUSAF <> No'ach sending the dove from the Ark. Describing the daughters of Tz'lofchad who had no brothers - NO'ACH. Furthermore, one

of the daughters is NO'A, sound-alike for NO'AH. And the dove with the olive branch is the BRITI SHALOM that G-d gave to Pinchas <> the almond branch and the boiling pot are from the haftara <> the wine cup is a BECHER, as in one of the sons of Binyamin <> BECAUSE the syllables are reversed. So reverse the syllables of BECAUSE to get KOZBI, the Midyanite princess who was with Zimri <> Ramban 4 - Rambam 1 looks like a score of a ball game. Rambam counts the Laws of Inheritance as one mitzva. Ramban breaks it down to four different mitzvot <> D + B = L. D is for the day count of Sukkot. B is for the number of bulls brought on each day. One the first day, 13 bulls. 1+13=14, 2+12=14, 3+11=14... and so on. Seventh day 7+7=14. L=14. L stands for lambs <> the flag with the yellow circle on a medium blue background is the flag of Palau, which sounds like Palu, one of Reuven's sons